



Strength in Numbers: collaborative approaches to extending Jisc's library analytics services

24th Annual Conference & Exhibition of the SLA/AGC

6-8 March 2018

Jo Lambert

- » Rising cost of e-resources vs institutional and consortial budget constraints
- » Data for:
 - › Assessing ROI
 - › Evaluation and analysis
 - › Reporting
 - › Demonstrating impact
 - › Marketing & promotion
 - › Understanding usage patterns and trend forecasting



- » Access - data collection and collation is time consuming
- » Analysis - data is inaccurate, unreliable or incomparable
- » Reporting – supplying reports in a timely manner
- » Effective (& automated) tools required to streamline work processes and optimise people time



- › **Access:** Quality assured, COUNTER-compliant usage data presented via simple, intuitive reports with export options for further analysis
- › **Analyse:** Track usage, analyse trends over time, compare & benchmark
- › **Report:** Create reports to monitor and communicate performance and ROI at the touch of a button



- Approx. 90 participating publishers and intermediaries
<http://jusp.jisc.ac.uk/participants/>
- Data
 - Gathered via SUSHI
 - Quality checked for standards compliance
 - Aggregated & presented via portal



» COUNTER reports

- › JR1, JR1a, JR1 GOA, JR2, JR5
- › BR1, BR2, BR3
- › DB1, DB2, PR1,
- › MR1 (future)

» Presentation

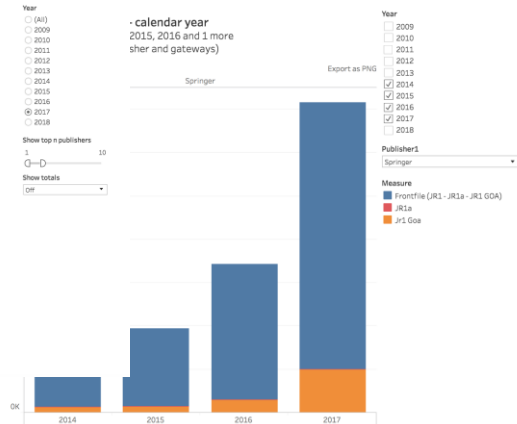
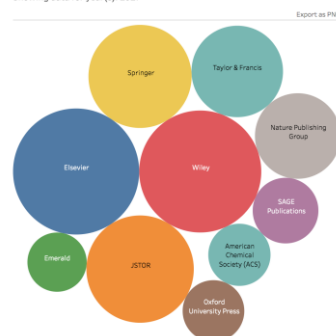
- › Journal level & summary reports
- › Book level & summary reports
- › Database and platform reports
- › Usage profiling reports
- › Data visualisations

A Dummy Institution		Publisher: Elsevier	Start: Jan 2017	End: Dec 2017
Overall usage of top 5 v average				
Top 5 titles	Downloads	Important note: The JR1 report is likely to contain a number of titles that are not in the deal you subscribe to. You are therefore advised to treat the nil usage figure in this table with some caution.		
Lancet, The	30245			
Cell	11796			
Lancet Oncology, The	8020			
Journal of the American College of Cardiology	7253			
European Journal of Cancer	5335			
Average for 3980 titles	269			

[Download this report as CSV file](#) [new window]

JR1 report for A Dummy Institution (Publisher: Elsevier) [★ core title] [📄 SOAJ Fully Open Access title, according to DOAJ, www.doaj.org]																	
No.	Title	Platform	ISSN	eISSN	Total	Jan 2017	Feb 2017	Mar 2017	Apr 2017	May 2017	Jun 2017	Jul 2017	Aug 2017	Sep 2017	Oct 2017	Nov 2017	Dec 2017
Totals					1068990	98289	84098	90600	76628	84743	109114	79561	76102	83270	107365	84826	84394
1	AASRI Procedia	ScienceDirect licensed content	2212-6716		639	27	85	55	84	94	27	43	63	54	31	65	1

Top publisher usage as bubble chart - by calendar year
Showing data for year(s): 2017



Charts show dummy data

» Rationale

- » Libraries increasingly data-driven
- » Data vis used to support broader understanding and analysis
- » Previous visualisations limited flexibility and functionality
- » Opportunities to support HEI processes

» Initial feedback

- » Alternative means of querying data
- » Engaging new audiences
- » Interactive and flexible



Charts show dummy data



[HOME](#) [ABOUT](#) [COP4](#) [COP5](#) [REGISTRIES OF COMPLIANCE](#) [MEMBERS' SECTION](#) [CONTACT](#)

COUNTER provides the standard that enables the knowledge community to count the use of electronic resources.

Known as the Code of Practice, the standard ensures vendors and publishers can provide their library customers with consistent, credible and comparable usage data.

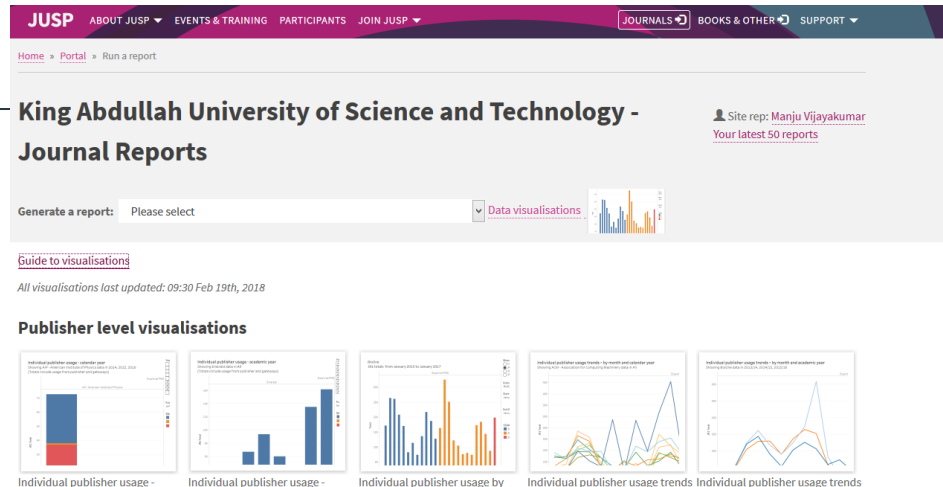


جامعة الملك عبد الله
للعلوم والتقنية
King Abdullah University of
Science and Technology



JUSP at KAUST

- Took one month to establish the portal
- Very easy to work with JUSP team
- JUSP has working relationship with around 80% of our Publishers
- No need to download stats by Publisher/Year/Collection
- All stats are collected by JUSP, and made available on the platform
- Many visualization options, many different reports and comparisons – hard to get though spreadsheets (nightmare)
- It's a game changer in Usage Analysis – very valuable to us



» Library Director was able to share a chart for the Deans to show ACS has the second largest usage on the Campus. The visual was a click away for him to produce.

» Publishers annual increase percentage proposals can be negotiated down with relative usage increase compared to other Publishers.

» Visual removed for purpose of circulation

» A national aggregation service, enabling IRs to share/expose usage statistics at the individual item level, based on a global standard – COUNTER

» Collect raw download data from IRs for all item types within repositories

» Process those raw data into COUNTER-conformant statistics

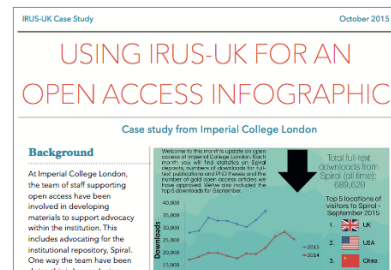


IRUS-UK

Apart from the advantages for individual institutions, IRUS-UK aggregates data to illustrate the combined usage of UK institutional repositories. This level of information provides an understanding of the ways in which UK IRs are used and provides organisations with statistics to use and exploit to support advocacy activities. Now that >90% of eligible UK IRs are using IRUS-UK, this participation provides opportunities. These are illustrated within several case studies.

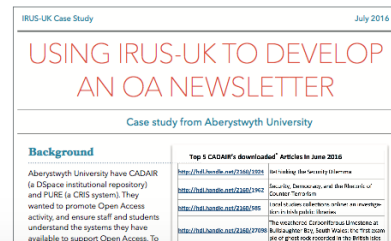
Imperial College London

Developing materials to support advocacy for their institutional repository, Spiral



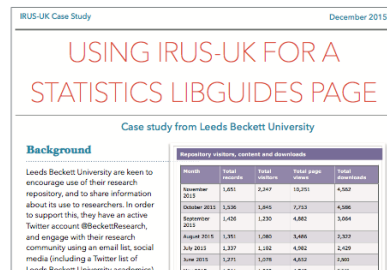
Aberystwyth University

Promoting Open Access activity and systems



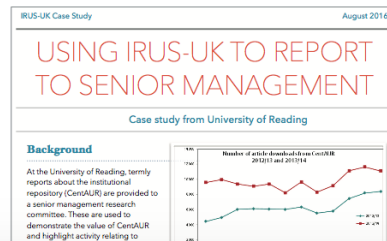
Leeds Beckett University

Encouraging use of their institutional repository



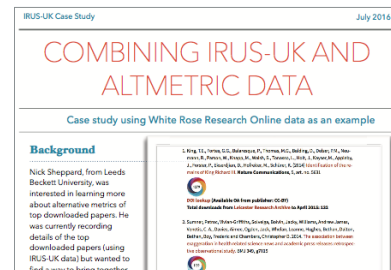
Reading University

Reporting to a senior management research committee



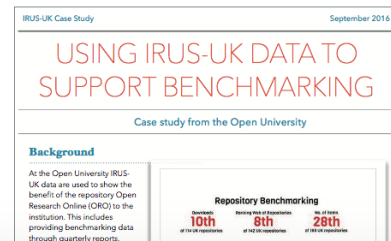
White Rose Research Online

Combining repository usage and Altmetric data (+ DIY guide for other IRs)



Open University

Promoting the benefits of their repository and benchmarking



Downloads by Country (Treemap)



Select Repository
(All)

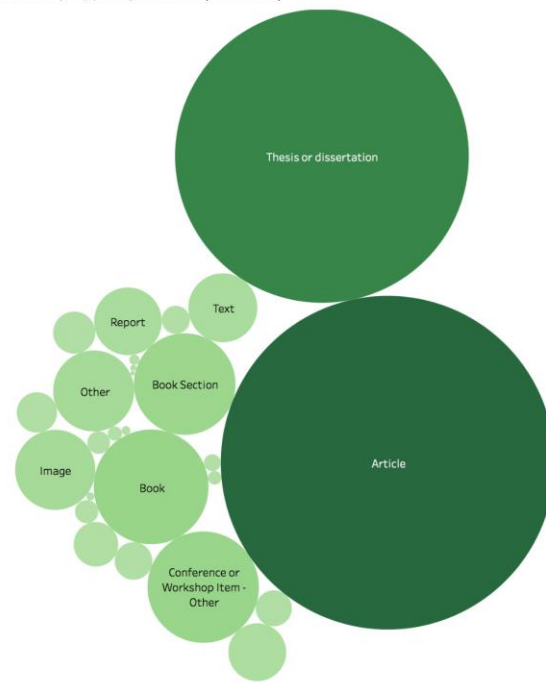
Select Month
June 2017

Select Item Type
(All)

Downloads
1 623,152

Reset visualisation

Downloads by Type by Month (Bubbles)



Select Repository
(All)

Select Month
June 2017

Downloads
1 1,006,952

- » Time & cost efficiencies
- » Quality: data is rigorously checked, assured and maintained
- » Data aggregation and profiling: supports comparison for defined groups or users
- » Community and shared approaches to development
- » Workflow mirrors common tasks
- » Reporting: can support both institutional and national reporting requirements
- » Standards: Lobbies for adherence to standards
- » Interoperability: supports data export via manual/automated methods for further analysis
- » Impartial: services delivered by established & trusted organisation
- » Expertise: team has extensive knowledge and expertise and established networks

- » Enhanced or improved data
- » New datasets, offering new insights
- » Greater efficiencies
- » New tools or functionality
- » New partnerships & collaborations offer new ideas and insights



JUSP: <http://jusp.jisc.ac.uk>

» Case studies: <https://jusp.jisc.ac.uk/case-studies/>

» Use cases: <https://jusp.jisc.ac.uk/use-cases/>

IRUS: <http://irus.mimas.ac.uk>

Jisc: <https://www.jisc.ac.uk/>

COUNTER: <https://www.projectcounter.org>

